



Anthony Gell  
— School —



# SIXTH FORM PROSPECTUS

2026 - 2028





# WELCOME TO AGS SIXTH FORM



Thank you for your interest in studying in the Sixth Form at Anthony Gell School. I hope you will find the information in this prospectus useful.

The qualifications and experience gained by students in Anthony Gell School Sixth Form equips them very well for further study, employment or training.

Each year we welcome students who are already studying at Anthony Gell, as well as students from other schools who wish to join our highly regarded Sixth Form.

We provide a wide range of courses, all taught by specialists, and in very favourable class sizes. This means our students get individual attention and high levels of support. In addition, we provide an enrichment programme for all students to help develop knowledge, skills and experience in key areas such as: health, careers, life-skills and global awareness.

Our sixth formers benefit from excellent pastoral support, with specialist tutors and learning mentors, all of whom are led by a Director of Sixth Form. Our staff provide care and guidance for students throughout their time in Sixth Form, helping to maintain an environment conducive to high quality learning.

Our A Level results are consistently very strong and highlight AGS as one of the best Sixth Forms in Derbyshire. Our outcomes have meant that we have been placed in the top 25% of Sixth Forms in England numerous times.

We carefully monitor the progress our students are making and provide termly reports, in addition to two parents' evenings each year. Experienced and highly effective Learning Mentors work closely with our students to help them develop the range of skills necessary for Post-16 study.

As a Sixth Former at AGS, you will be fully-involved in the life of the school, and be an excellent role model for younger students. Our Sixth Form students also have unrivalled access to our excellent sports facilities, including use of the fitness suite and the climbing room in the leisure centre on site, at heavily subsidised rates.

I hope you enjoy discovering why Anthony Gell Sixth Form is a great choice for so many students.

**Malcolm Kelly - Headteacher**

"The AGS Sixth Form is a place where staff help you fulfil your potential. although the focus is on learning, there is also time for developing as a person"

AGS SIXTH  
FORM STUDENT



# CONTENTS

What to expect in AGS Sixth Form	4	37	History
How to choose your courses	7	39	Maths
Our AGS	8	41	Further Maths
<b>One-Year Pathways</b>	10	43	Core Maths <b>NEW</b>
Health & Social Care	12	45	Media Studies
Sport & Physical Activity	13	47	Music
IT	14	49	Music Practitioner
<b>Optional Extra Qualifications</b>	15	51	Photography
<b>Two-Year Pathways</b>	16	53	Physical Education
Art	19	55	Sport & Physical Activity
Biology	21	57	Physics
Business Studies	23	59	Politics
Chemistry	25	61	Product Design
Computer Science	27	63	Psychology
English Literature	29	65	Sociology
French	31	67	Religious Studies <b>NEW</b>
Geography	33	68	AGS in Their Own Words
Health and Social Care	35		





# WHAT TO EXPECT IN AGS SIXTH FORM



**We feel that the Sixth Form at Anthony Gell School offers the care, guidance and direction that students need in order to achieve - we would really like you to be a part of it and to bring your own skills, talents and personality to our sixth form, to enhance the special community of which we are already very proud.**

We enjoy welcoming students to our Sixth Form, knowing that by working together throughout their time with us we will see them leave as confident, capable, informed and resourceful adults, with a vital contribution to make to the world around them. The support we offer to achieve these outcomes is tailored to each student, and is structured to ensure that increasingly, through the one or two years, all students are able to take greater and more effective responsibility for their own work and progress.

We pride ourselves on providing excellent support for Sixth Form students, and as part of this we have two dedicated Learning Mentors who are located in the Sixth Form Study Centre. Their aim is to help every student transition from GCSE to Sixth Form study. Helping with time management, organisation, essay writing, proof reading and keeping up to date with coursework.

The Sixth Form Study Centre is open to all Sixth Form students and we encourage students to use it to complete work and receive support.

We also offer a wide variety of extra curricular opportunities, as well as additional academic opportunities like the Extended Project Qualification (EPQ) which can add up to 28 UCAS points, or half an A Level. The student's choice of topic in an EPQ is free, although they must show that it is academically useful and related to their current course of study or future career. The EPQ has been praised by universities for helping prepare students for higher education.


Each student comes under the care of an experienced Sixth Form Tutor. Tutors are often a student's first point of contact for help and guidance. Tutors keep a daily register, help with day to day questions, provide guidance with careers/higher education, write references and provide tutor reports. Our Sixth Form Tutors also deliver part of the Sixth Form personal development programme. Tutors form a vital link between the school and parents, making sure we all work together as a team towards the best outcomes for students.

**Julia Moseley - Director of Sixth Form**



"The atmosphere in the Sixth Form is relaxed but purposeful. We are included in the school as a whole, but we are treated in a more mature way which encourages us to work harder"

AGS SIXTH FORM STUDENT



**"I would encourage students to ask questions and challenge me about the courses we offer. That way we can make sure we offer the right subjects for each cohort."**

**KATY LOWE  
-ASSISTANT  
HEADTEACHER**



# FLEXIBLE CHOICES

A Sixth Form student spoke to Assistant Headteacher Katy Lowe about how students choose courses - and how the school supports them in doing this.

**Student: So, what is your role in the school?**

**KL:** I'm responsible for organising the curriculum, which includes identifying subjects we offer, the allocation of time for these subjects in the timetable and working out how we can best serve the needs of all of our students both in terms of their interests and talents, and what they want to do in the future.

**Student: How do you go about organising a Sixth Form curriculum?**

**KL:** It's a long process, it takes at least a year! It starts by talking to the students in a series of assemblies and listening to what they want - making sure we don't put on courses no one wants to do. We keep talking to students throughout the year - up to and beyond GCSE results day. So we tailor the curriculum each year to that particular cohort of students. It's not 'one size fits all,' and that's one of our strengths; as a Sixth Form we are very, very flexible.

**Student: How do students know what courses are right for them?**

**KL:** Students get the chance to pick their preferred subjects throughout Year 11 from a grid I

produce, we give them the maximum amount of opportunities to discuss options with teachers and the leadership team so that we can be sure they are on an appropriate course. It's not just about their studies now, it's about creating a pathway that will take them on to the next stage, whether that's university, a higher level apprenticeship or employment. However we don't just have courses which take two years to complete, one of the things I am most proud of is the One-Year Pathway option we offer. I identified a small group of students who either were not ready to leave AGS, or they just needed another year's study. The One-Year Pathway option allows these students an extra year to gain further qualifications, experience, maturity and confidence before they move on to the next stage. That might be to continue on to the Two-Year Pathway, go into employment, or enrol on an apprenticeship.

**Student: I know I took a while to decide on my choices, what advice would you give Year 11 students on how to choose courses? How do they know what is right for them?**

**KL:** Choose subjects you are passionate about, that play to your strengths, and that you may want to continue beyond Sixth Form. Enjoying what you study increases your chances of success. Research the courses or careers you're interested in to see which subjects and UCAS points you'll need—often only one subject is compulsory, so choose others that complement it and that you enjoy. We've also introduced applied subjects like Photography and Sport & Physical Activity, which are practical and assessed over two years. Finally, stay open-minded and consider exploring new subjects.

**STUDENT: I ended up doing completely different courses to the ones I chose in Year 11. Do you think this is common?**

**KL:** Absolutely, and we encourage that. Ultimately we just want the best for our students, with the widest possible range of options we can offer, so if students have changed their minds, or subjects they want to do clash on the timetable, keep talking to us and we'll try to find the best solution.

# OUR AGS

Five students talk about why they chose to study at AGS - and why they think you should too!



**"The staff are supportive, helpful and inspiring."**

## Harriet - Currently studying Biology at Sheffield University.

Staying at AGS Sixth Form was the best decision I made during my time at school. The staff were extremely supportive, helpful and inspiring. The sixth form system at Anthony Gell allowed me to trial extra subjects for the first few weeks, this helped me decide where my interests lay.

During my first few months of Sixth Form, there were multiple opportunities for me to gain enrichment experience and participate in extracurricular activities. Staff helped guide me through how to use my enrichment in my personal statement for university.

Staying for Sixth Form was the right fit for me as Gell offer a wide range of courses that many other colleges and schools didn't offer. I took Biology as one of my subjects, which will help me in the future as I'm currently doing a Biology degree at university.

George - Currently studying Human, Social and Political Sciences at Cambridge University.

Anthony Gell Sixth Form combines great teaching, great opportunities and a very friendly and enjoyable environment. My favourite A Levels were History and Politics but I also enjoyed my other two subjects; English Literature and Maths. The teachers were passionate as well as very likeable, they were always willing to help with any problems I had. I stayed at this Sixth Form because I was surrounded by my friends in an environment I knew well, with teachers that I knew could help me do my best. The Sixth Form also offered great enrichment opportunities; I helped out in maths lessons, and also got to go on trips to places like universities and apprenticeship events. The AGS Sixth Form is smaller than some others, so teachers have more time for individual help. This Sixth Form let me achieve what I wanted to do.



**"AGS allowed me to achieve what I wanted to do."**



"The number of extra curricular opportunities influenced my decision to choose AGS."

### Lillie - Currently studying Primary Education with QTS at York St John University.

There was a fantastic atmosphere in the study centre, everyone knew and supported each other. Smaller class sizes at A Level made it easier to build strong, personal relationships with teachers. At AGS Sixth Form, you're treated like an adult, which really helps bridge the gap between school and university or the world of work. The excellent music facilities were a major reason I chose to stay at Anthony Gell. Music is something I'm passionate about and hope to pursue in the future, so continuing my one-to-one lessons, which I've had since Year 7, was really important to me. The wide range of extracurricular clubs also played a big part in my decision to stay, as I knew I'd have far more opportunities here than at other Sixth Forms.

### Nathan - Taking up a fantastic opportunity to join the Navy.

With a wide range of courses, welcoming staff, a dedicated Sixth Form study centre, and specialist equipment, you have everything you need to get started and thrive. As a Sixth Form student, I chose Biology, History, and Geography because I've always loved these subjects and wanted to explore them in more depth. Each subject is taught by two specialist teachers who are approachable, supportive, and always ready to help with any questions or guidance you might need.

Anthony Gell also provides excellent access to sports facilities, with Sixth Form students receiving priority use. This not only helps you stay active but also supports your mental wellbeing. Above all, the friendly, close-knit atmosphere and strong sense of community make Anthony Gell a genuinely welcoming and enjoyable place to learn.



"I knew AGS was the right place for me."



"I want my studies to help me change the world for the better."

### Phoebe - Currently studying Animation at Norwich University of the Arts after taking a year out.

The AGS Sixth Form is brilliant because of the one-to-one time with the teachers and supervisors, as well as all the resources they have available. They help encourage independent learning but are available to help whenever you need them, making the transition period from GCSEs to A Levels as smooth as it could possibly be. I chose Politics as one of my A Levels as it gave me a new understanding of the world and how it works, meaning I could help change it for the better and make educated and rational decisions. AGS Sixth Form offers brilliant extracurricular activities and projects that gave me an opportunity to do something I wouldn't have otherwise done.

The environment and atmosphere in school and in the Sixth Form are great, and I feel that this has also helped me a lot in developing my skills and knowledge for later life.



# ONE YEAR PATHWAYS

**Anthony Gell School's** One-Year Pathways are Level 2 vocational qualifications for students aged 16+. The One-Year Pathway will provide our students with an opportunity to bridge the gap to further study, an apprenticeship or employment. The qualifications offered have workplace in mind and provide an opportunity for students to access high-quality courses in a place they know well.

**The One-year Pathway** provides an element of choice and at the end of the year of study, students will receive accreditation in at least two qualifications. Students will also complete a period of regular work experience across the year and a guided programme focusing on employability skills. We have a good reputation for finding high-quality student placements.

**All courses offer** a mixture of centre-assessed units with wider, project-based practical assessment opportunities, as well as examined units.

**One-Year Pathways** also provide the chance for students to resit GCSE English or Maths (if a student's grades achieved in English or Maths are below a Grade 4).

As part of the One-Year Pathways all students will complete a day of work experience each week to compliment their courses.







# ONE-YEAR PATHWAY COURSES

The following pages contain the current options for one-year pathway courses.

# HEALTH & SOCIAL CARE

## **Course Outline:**

One-Year Pathway

Level 2

Cambridge Technical

Certificate

OCR

## **Entry Requirements:**

This course is suitable for many of the students who may not meet the entry requirements for the two-year pathways. In order to study this course, you must not have studied Health and Social Care at GCSE previously.



This is a one year course where students will learn the principles of working in the Health and Social Care sector. They will consider how living with conditions or illnesses can affect people: including the social, financial and psychological impacts, not just the signs, symptoms and the treatment. Students will also learn about Health and Safety legislation, as well as understanding the role of safeguarding within Health and Social Care, and the core values of person centred care.

## **Your Future**

Level 2 Health and Social care can take you onto a level 3 course or into an apprenticeship. It can also lead to careers such as Healthcare Assistant, Nursery Assistant, working in Social Care or as a Family Resource Worker.

## **How is Health & Social Care assessed?**

Students will be assessed on 4 units. Unit 1 and unit 2 are both written exams worth 33% and 17% of the course. Unit 3 and Unit 4 are both controlled assessments worth 17% and 33% of the course.

This course focuses on developing your understanding of the impact of sport and activity on the human body and the role it plays within society. You will learn skills towards the creation and running of an inclusive sport and physical activity session. There will be opportunity to link to careers and employment within this course.

### **Unit 1: Physical activity, health and wellbeing**

You will learn about the effects and benefits of taking part in physical activity on body systems and mental health, how we can measure health and wellbeing and will investigate the trends in physical activity participation and the barriers that might stop people taking part.

### **Unit 2: Physical preparation and readiness for sport and physical activity**

You will learn about the short-term and long-term effects of sport and physical activity on the body, the use of warm-ups and cool downs, the needs of different participants in sport and physical activity, and the causes and treatment of sport injuries.

### **Unit 3: Inclusivity, equality and diversity in delivering sport and physical activity**

You will develop an understanding about inclusivity, equality, and diversity within sports, and an understanding of how to promote inclusivity, equality and diversity.

### **Unit 4: Leading sport and physical activity sessions**

You will develop an understanding of the roles, responsibilities, skills and behaviours of activity leaders, and plan, lead and review a sport and activity session.



### **Your Future**

Level 2 Sport and physical activity can take you onto a level 3 course or into an apprenticeship. This can then lead to careers such as, sports coaching, working in the leisure industry and leading youth sports teams.

### **How is this course assessed?**

There are two external exams for unit 1 and 2. The unit 1 exam is multiple choice and the unit 2 exam includes extended answer questions. Units 3 and 4 are assessed through internally marked coursework. You are not assessed on your practical skills.

# **SPORT & PHYSICAL ACTIVITY**

## **Course Outline:**

**One-Year Pathway**

**Level 2**

**Cambridge Technical**

**Certificate**

**OCR**

## **Entry Requirements:**

These courses are suitable for many of the students who may not meet the entry requirements for the two year pathways.

# IT

**Course Outline:**  
**One-Year Pathway**  
**Level 2**  
**Cambridge Technical**  
**Certificate**  
**OCR**

**Entry Requirements:**  
These courses are suitable for many of the students who may not meet the entry requirements for the two-year pathways.

## Your Future

Level 2 IT is a very diverse qualification which can be applied to most work places.



Technology underpins our lives. It's in the alarm that woke you up this morning, the commute that got you to school or work, and the food on your table. It's ingrained in every industry, from Education through to Engineering and Entertainment. It helps remote communities conserve vital resources, creates more effective medicines, and keeps us safe. It allows us to form networks right around the planet and far into space.

Behind every IT application that we have, and all those yet to come, are clever, creative people. IT people. And by studying IT, you could become the expert who designs and creates the systems we all rely on.

This course has been developed to inspire and enthuse learners to become technology savvy – producers of technology products and systems and not just consumers. It should give learners the opportunity to gain a broad understanding and knowledge of the Information Technology sector and some aspects of the creative industries. It will encourage personal development, motivation and confidence, through practical participation and by giving learners responsibility for their own projects.

**Mandatory Units:**

Unit 1 - Essentials of IT (60 GLH, externally assessed, online exam)

Unit 2 - Essentials of cyber security (30 GLH, externally assessed, written exam)

Unit 17 - Using data analysis software (60 GLH, internally assessed)

**Optional Units:**

Unit 8 - Using emerging technologies (30 GLH, internally assessed) or

Unit 16 - Using social media channels for business (30 GLH, internally assessed)

## How is IT assessed?

This qualification is taught over 180 guided learning hours (GLH). It has mandatory and optional specialist units. learners must complete unit 1 , unit 2 and unit 17 and a choice of optional units to reach a total of 180 GLH. This qualification has units that are assessed internally and units that are assessed externally.





# OPTIONAL EXTRA QUALIFICATIONS

## AVAILABLE AT AGS SIXTH FORM

### Level 3 Sports Leaders

The Level 3 Qualification in Sports Leadership is a nationally recognised qualification that enables successful learners to independently lead purposeful and enjoyable sport/physical activity. The qualification aligns with professional standards for sport and physical activity leadership, especially through the focus on leading inclusive sessions to participants.

This qualification is delivered by the Rural Derbyshire School Sports Partnership, who are based here in AGS.

16 UCAS tariff points

Tutored time (or guided learning) 60 hours completed over 2 years.

The learner evidence record is mandatory and uses the following assessment methods:

- Practical observation
- Written tasks (task worksheets provided in the learner evidence record)
- Plans and evaluations

### EPQ - Extended Project Qualification

This qualification helps students develop and demonstrate their project management skills and provides opportunities for extended writing, both of which are highly valued for progression to higher education and employment. Students can tailor their project to fit their individual needs, choices and aspirations with the agreement of their centre.

The outcome of the project can be a design, performance, report, dissertation or artefact.

The project should take 120 hours.

Students need to produce a production log, verified by the supervisor, a written report, supplementary evidence and a presentation.

Grading: A\* – E

Marking:

20% for project planning and time-management.

20% for research skill and use of resources.

40% for idea and outcome.

20% for evaluation and presentation.

EPQs are widely valued by universities and colleges making points-based offers and can reduce grade offers.

# TWO-YEAR PATHWAYS



**All Level 3 a level subjects** are two-year courses which are examined at the end of year 13. All level 3 vocational subjects are two year courses with exams at the end of Year 12 and Year 13. The range of traditional Level 3 A Levels and Level 3 vocational courses can be combined according to the needs of the student, a flexibility that is a strength of the Sixth Form. Some courses are entirely assessed with external examinations, others have some elements of coursework and controlled assessment. All Level 3 courses offer excellent progression routes upon completion. This can include progression on to university, apprenticeships or employment.



**We regularly** review the breadth of courses offered and have added new courses in each of the last four years. New courses that we are offering to the current Year 11 cohort are Core Maths and Religious Studies. Year 12 students in 2024 have made an excellent start in Photography, which was new for last year.

**Although we make** every effort to run all of our courses, we can only run a course if sufficient students wish to take it. We will let you know if there is an issue with any subject you have chosen. Please also bear in mind that there are minimum entry requirements for all courses. Once you have your GCSE results we will have individual conversations about suitability for the courses you have chosen.





# TWO-YEAR PATHWAY COURSES

The following pages contain the current options for two-year pathway courses.



In A Level Art, students start work from a common, observational starting point; they then develop their ideas both in class and through homework on an individual basis by negotiation with their teachers.

The course is designed to encourage learners to develop skills, creativity, imagination, and independence based on personal experience, taught skills and understanding.

They will develop a deep understanding of their chosen specialism and the ability to critically evaluate their own work and the work of others. They will be able to tailor their course to fit their individual needs, choices and aspirations in order to follow their chosen progression route through to further or higher education or the workplace.

During the second year of study students produce a "Related Study"; which consists of a minimum of 1500 words and examples of illustrations/own work relating to each individual student's chosen topics and sit a 15 hour controlled assessment.

## Your Future

Art can lead to qualifications in: Illustration, Fashion Design, 3D Design, Car Design, Beauty/ Make Up, Architecture, Teaching, Graphic Design and Animation.

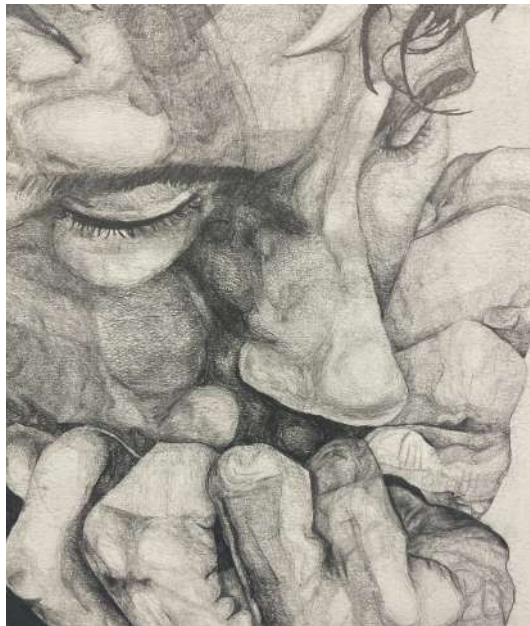
"I find my art lessons relaxing yet challenging. art is different to other lessons as you don't follow strict guidelines but have to work out solutions both independently and with guidance".

"I like the fact there is no right or wrong in art. You are just striving towards the best possible outcome suiting your individual ability."

## Sixth Form Student







# ART

**Course Outline:**  
Two-Year Pathway  
Level 3  
A Level  
OCR

**Entry Requirements:**  
Five Level 2 GCSE or  
Vocational qualifications  
at a minimum of Grade  
4/Level 2 Pass.

This should include  
Grade 6 GCSE Art. If no  
GCSE in Art, a practical  
task will be set to assess  
suitability.

## How is this course assessed?

Students are assessed at the end of year 13 on coursework made up of 2 parts and 1 exam. The coursework is worth 60% of the qualification and the exam is worth 40%.

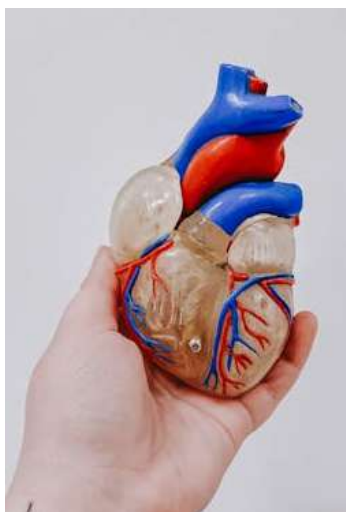
Biology is the scientific study of life and living organisms. This course gives students the opportunity to explore all aspects of the subject from molecular biology, cell structure and transport systems through to evolution, biodiversity and genetics. The course is split into different theoretical topics with practical skills integrated throughout.

Practical work is a vital part of Biology as biologists apply their skills in a wide variety of contexts: from conservation to food production; from tracking invasive species to controlling disease. During A Level Biology there will be twelve core practical tasks over both years; these along with other practical work will give you the opportunity to learn, practise and demonstrate these skills.



"I like Biology as it allows me to understand processes I see every day without realising; for example, I take for granted my hands moving, but now I know HOW they move."

**Sixth Form Student**





## Your Future

A Level Biology is required or recommended for those wishing to study: Biological Sciences, Medicine, Veterinary medicine, Dentistry, Physiotherapy, Zoology, Agriculture, and Radiotherapy at University.

## How is this course assessed?

Students are assessed at the end of Year 13 with three two hour written exams. The first two exams are each worth 35% of the qualification. The last written exam is worth 30% of the qualification.



# BIOLOGY

## Course Outline:

Two-Year Pathway

Level 3

A Level

AQA

## Entry Requirements:

Five Level 2 GCSE or Vocational qualifications at a minimum of Grade 4/Level 2 Pass. This must include Grade 6:6 in Combined Science or if Triple Science, Grade 6 in Biology and 6 in another science. Also a Grade 6 in Maths & English Language.

This A Level Business course introduces you to all you need to know about working in business, providing a solid foundation for further study. With a focus on helping you to become a good decision maker, you'll learn essential managerial skills, alongside techniques to help you become an analytical problem solver. These skills are all highly sought after and valued in a wide range of careers.

In Year 12 students will be introduced to key business areas: marketing, operations, finance and human resource management. This includes a special focus on decision making – particularly how decisions made in one area can affect the rest of the business. In Year 13 students will investigate the strategic decisions that all businesses have to make.

If you'd like to study Business, Finance or Management at university, A-level Business provides an excellent foundation. The skills you learn are also transferable across a broad range of subjects and careers. Whatever you choose to do in the future, you'll find that the things you learn in this course will help. For example, you'll probably work with lots of different people, so knowledge of motivational theory will help you to work well with others and help them achieve their potential. You might have ambitious plans to start your own business. If that's the case, you'll find the marketing and finance topics particularly useful.





"Business Studies gave me a real understanding of the world of business today. Applying knowledge to real businesses improved my understanding of how businesses work and function".

**Sixth Form Student**

## Your Future

Business studies can lead to jobs in Accountancy, Advertising, Banking and Investment. It is a key skill that can open doors in many areas of the world of work from management opportunities to entrepreneurial pathways.

## How is this course assessed?

Business Studies consists of three two hour written exams taken at the end of the two year course. All three papers will draw on material from the whole course, and will feature a range of question styles including multiple choice questions, short answer questions, essay questions, data response questions and case studies.



# BUSINESS STUDIES

## Course Outline:

Two-Year Pathway

Level 3

A Level

AQA

## Entry Requirements:

Five Level 2 GCSE or Vocational qualifications at a minimum of Grade 4/Level 2 Pass including GCSE English Language Level 5+.

Chemistry is a fascinating subject: at A Level you will further develop your ideas of atomic structure and bonding and apply these theories into a huge range of compounds. You will study the physical theories on energy, amount of substance and equilibria that underpin chemical industry and research. A Level chemists will also start to explore the world of Organic Chemistry and look into the chemistry of properties of the molecules that are part of living systems.

Chemistry is both a theoretical and practical subject. Whether in the laboratory or in the field, Chemists apply their knowledge and use their practical skills to find solutions to problems, challenges and questions. During A Level Chemistry there will be twelve core practical tasks over both years; these along with other practical work will give you the opportunity to learn, practise and demonstrate these skills alongside applying your theoretical knowledge.

## Your Future

Chemistry can lead to a wide range of degrees and careers including Medicine, Veterinary Science, Dentistry, Geology, Chemical Engineering, Pharmacy and Pharmacology. It also provides a strong foundation for fields such as Environmental Science, Forensic Science and Biochemistry, and is looked at favourably in the accounting, law and business sectors.



"I am glad that I chose Chemistry alongside the other sciences. The lessons are interesting and the teachers are always able to help. It's hard work but is satisfying when it all clicks together".

**Sixth Form Student**

### **How is this course assessed?**

Students are assessed at the end of Year 13 with three two hour written exams. The first two exams are each worth 35% of the qualification. The last written exam is worth 30% of the qualification.

# CHEMISTRY

### **Course Outline:**

Two-Year Pathway

Level 3

A Level

AQA

### **Entry Requirements:**

Five Level 2 GCSE or Vocational qualifications at a minimum of Grade 4/Level 2 Pass, including Grade 6:6 in Combined Science or if Triple Science, Grade 6 in Chemistry and 6 in another science. Also Grade 6 in Mathematics.







Computer Science is a practical subject where students can apply the academic principles learnt in the classroom to real-world systems. It's an intensely creative subject that combines invention and excitement, and can look at the natural world through a digital prism.

The aims of this qualification are to enable learners to develop:

An understanding and ability to apply the fundamental principles and concepts of Computer Science, including: Abstraction, Decomposition, Logic, Algorithms and Data Representation.

The ability to analyse problems in computational terms through practical experience of solving problems, including program writing.

The capacity to think creatively, innovatively, analytically, logically and critically.

The capacity to see relationships between different aspects of Computer Science.

Mathematical skills.

## Your Future

Computer Science can lead to careers such as:

Cyber Security Analyst, Data Analyst, Database Administrator, Forensic Computer Analyst, Games developer and Information systems manager.



"I have really enjoyed GCSE Computer Science and look forward to continuing my studies at A Level"

"I really like the idea that 20% of the course is assessed outside of an exam"

"The programming element is addictive and I enjoy problem solving so this is an ideal subject for me".

### Sixth Form Student



### How is this course assessed?

Students are assessed at the end of year 13 with 2 exams, lasting 2 hours 30 minutes. These are worth 40% of the a level each. Students will also be assessed on a non-exam assessment which makes up 20% of the a level.

# COMPUTER SCIENCE

### Course Outline:

Two-Year Pathway

Level 3

A Level

AQA

### Entry Requirements:

Five Level 2 GCSE or Vocational qualifications at a minimum of Grade 4/Level 2 Pass. You must also have studied computer science at GCSE and obtained at least Grade 6.





## How is this course assessed?

Students will be assessed at the end of Year 13 with 2 examinations, each worth 40% of the overall qualification. The first will be 2 and a half hours long and the second will be 3 hours long. Students will also be assessed on the non examination unit which consists of two essays that are 1500 words each; together they are worth 20% of the qualification.

English Literature is a highly regarded A Level among universities and employers. This course centres on different ways of reading texts and making connections between them. It looks at specific genres such as tragedy and crime. Students are encouraged to develop their own interpretations and become confident, independent readers.

In year 12, you will explore 'Aspects of Tragedy' and study a Shakespeare play (usually Othello), a modern drama text (usually Death of a Salesman) and poetry (usually by Keats). You will consider these texts in their contexts as well as how they are examples of their genre. In year 13, you will extend this and explore 'Elements of Crime Writing.' Again, you will study a range of texts linked to the genre. There is also an NEA (coursework) element to encourage independent study.





## Your Future

As an academic, core and highly recognised subject, English can help gain entry to any Higher Education course, from Media to Law.

Alternatively, a career in Journalism, Media or Business.

Career pathways for English: Publishing, Journalism, Media, Advertising, Film, Television, Radio, Marketing, Law, Health, Charity and Event Management.

"I have enjoyed examining Shakespeare in more detail than at GCSE. We have used the skills we learnt then but built on them and I feel able to analyse a text for greater levels of meaning, while considering critical ideas such as feminism. English has really helped with how to write a well organised essay in other subjects".

### Sixth Form Student

# ENGLISH LITERATURE

## Course Outline:

Two-Year Pathway

Level 3

A Level

AQA

## Entry Requirements:

Five Level 2 GCSE or

Vocational

qualifications at a  
minimum of Grade

4/Level 2 Pass

including English

Language Grade 6

and/or English

Literature Grade 6.



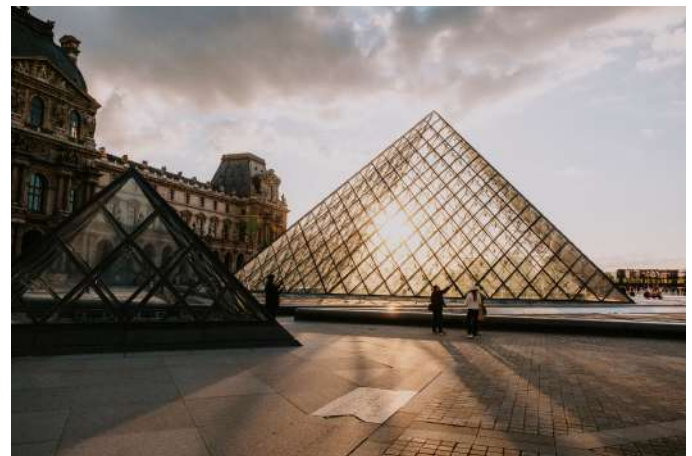
Students study French technological and social change, looking at diversity and the benefits it brings. They will study highlights of French-speaking artistic culture, including francophone music and cinema, as well as learning about political engagement and who wields political power in the French-speaking world.

Students also explore the influence of the past on present-day French-speaking communities. Throughout their studies, students will learn the language in the context of French-speaking countries and the issues and influences that have shaped them. Students will study texts and film and have the opportunity to carry out independent research on an area of their choice.

Assessment tasks will be varied and cover listening, speaking, reading and writing skills.

## How is this course assessed?

Students will be assessed at the end of Year 13 on three examinations. Paper 1 (listening, reading and writing) is 2 hours and 30 minutes long and is worth 50% of the qualification. Paper two (writing) is 2 hours long and is worth 20% of the qualification. Paper 3, the speaking test is worth 30% of the qualification.





## Your Future

French can lead to joint degrees with areas such as Law and Philosophy. In the past two years AGS students have gone on to study French with Chemistry, Business, Spanish and Geography. Careers can include Interpreter, Political Risk Analyst, Foreign Correspondent and Teacher.



"My experience of French at Gell could only be described as enlightening, as it inspired me to further study the subject, along with fuelling my passion for other languages. A small class always enabled me to have the help I needed, along with a friendly atmosphere and a perfect student-teacher relationship, enhancing our learning experience".

**Sixth Form Student**

# FRENCH

## Course Outline:

Two-Year Pathway

Level 3

A Level

AQA

## Entry Requirements:

Five Level 2 GCSE or

Vocational

qualifications at a

minimum of Grade

4/Level 2 Pass

including Grade 6 in

French.



Geography is at the heart of so many of the world's current issues, with the 21<sup>st</sup> century posing increasing challenges for the future generations of the human and physical worlds in which we live. Geography is a highly valued subject in schools; in Higher Education in terms of both the teaching and the value of research being carried out, and in the workplace, and is considered a facilitating subject by the Russell Group of Universities.

This course consists of eight units that are assessed by examination over 3 papers at A Level.

### **Dynamic landscapes and physical systems and sustainability:**

#### **Taught in Year 12**

1. Glacial and tectonic processes and change.
2. The causes and management of tectonic hazards.

#### **Taught in Year 13**

3. The carbon cycle and energy security.
4. The water cycle and water insecurity.

### **Dynamic places and human systems and geopolitics:**

#### **Taught in Year 12**

1. The causes and impacts of globalisation.
2. Regeneration and places in decline.

#### **Taught in Year 13**

3. Superpowers: challenges & opportunities.
4. Inequalities in human rights.



## **How is this course assessed?**

Students are assessed in three examinations lasting 2 hours 15 minutes. Paper 1 and paper 2 are each worth 30% of the a level, paper 3 is worth 20%.

Students will also undertake a non-examination research project worth 20% of the a level.



## Your Future

Geography can lead to jobs in Travel, Environment Agency, The UN, Flood Control, Natural Hazards Management, Sustainable Development, Architecture, Teaching, Urban Planning and the Sciences.

"Geography is the subject which holds the key to our future. I love learning about how the physical environment interacts with the human environment. The field trips were also great fun and really helped my understanding of the subject".

**Sixth Form Student**

# GEOGRAPHY

## Course Outline:

Two-Year Pathway

Level 3

A Level

Edexcel

## Entry Requirements:

Five Level 2 GCSE or

Vocational

qualifications at a

minimum of Grade

5/Level 2 Pass including

Grade 6 or above in

English and Grade 6 in

Geography.





The Pearson Level 3 Alternative Academic Qualification BTEC National in Health and Social Care (Extended Certificate) is an Alternative Academic Qualification (AAQ) designed for post-16 students with an interest in Health and Social Care and aiming to progress to higher education as a route to graduate level employment. Equivalent to one A Level in size, it is suitable for students looking to develop their applied knowledge and skills in Health and Social Care alongside two A Levels.

The qualification has been developed in consultation with higher education representatives to ensure students have the knowledge, understanding and skills they need to progress to, and thrive, in higher education. The qualification has three mandatory units covering the following topics:

- **Human Lifespan and Development\*** – PIES and factors affecting growth and development, interventions and the different professionals providing care and treatment.
  - **Human Biology and Health\*** – Human body structure and systems, normal physiological functioning and the impact of common disorders.
  - **Health and Social Care Practice** – Core principles, values and legislation that underpin and influence health and social care, and the effect of social determinants on an individual health status.
- There are 4 optional units, chosen by the teaching team, covering the following topics:
- **Health, Social Policy and Wellbeing** – Public Health Policy and its influences, including health-related organisations/groups and a range of strategic factors.
  - **Promoting Health Education** – Health education, its purpose and use of different approaches and models to achieve positive health outcomes.
  - **Safe Environments in Health and Social Care** – Appropriate provisions in services relevant to different needs; governance relating to safe environments.
  - **Health Science** – Types of infections and their potential impact on a local, national and international scale.

## How is this course assessed?

The highlighted assessments (\*) are assessed via an external examination. All other units are assessed via internal centre assessed coursework. Students will be graded using the BTEC system of Pass, Merit, Distinction and Distinction Star.







# HEALTH & SOCIAL CARE

## **Course Outline:**

Two-Year Pathway

Level 3

AAQ

Pearson

## **Entry Requirements:**

Five Level 2 GCSE or

Vocational

qualifications at a

minimum of Grade

4/Level 2 Pass

including 2 x Grade 4

in Combined Science

and Grade 4 in English.

## **Your Future**

Health and Social Care can lead to a range of careers via Higher Education Courses or Apprenticeships:

Police Officer, Probation Officer, Paramedic, Nursing, Midwifery, Health Visitor, Mental Health, Counselling, Occupational Therapy, Social Work, Teaching, Early Years, Nursery Assistants, Care Assistants.

"Highly relevant to my future career."

"Given me insight into a variety of disorders and health conditions."

"Introduced me to careers I did not know about."

"Knowledge and understanding of vital caring skills and techniques."

## **Sixth Form Students**

Studying A Level History helps you gain a knowledge and understanding of the past as well as helping you develop skills that are invaluable in many jobs. You will improve your ability to analyse, communicate and think critically. The topics we study are interesting, challenging and engaging.



## How is this course assessed?

History is assessed at the end of year 13 on 3 components. Component 1 and component 2 each have a 2 hour 30 minute exam consisting of 3 essays each.

Component 3 is a 3000 - 3500 word independent study which is internally assessed.



### Component 1: Tsarist and Communist Russia (1855-1964)

- You will study significant historical developments in Tsarist and Communist Russia 1855-1964. You will investigate:
- Autocratic rule in Russia under the rule of the Tsars.
- The reasons why autocracy collapsed in Russia in 1917, focusing on the revolutions and the establishment of Communist rule.
- The Soviet Union under Lenin and Stalin.
- The rise and fall of Khrushchev.

### Component 2: The Making of Modern Britain (1951-2007)

- The British component of the course focuses on political, economic and social developments following the Second World War. You will focus on:
- The post-war boom and changing social attitudes in relation to class, gender, race and youth.
- The end of the post-war consensus in 1970 including the problems relating to Northern Ireland.
- The impact of Conservative rule under Margaret Thatcher and foreign policy including the conflict over the Falklands.
- The collapse of Thatcherism and the era of New Labour.

### Component 3: Coursework

- You will carry out an independent historical investigation into the causes of the French Revolution from 1689—1789.



"The skills I developed in this subject have helped me so much with my other A Level subjects. I love the topics on Russia; it's such a contrast to our society and has made me think about how I view politics and society. I can't wait to continue my learning at University."

**Sixth Form Student**



## Your Future

History can lead to jobs in Law, Politics, Management, Academia, Research, Teaching, Archaeology, Media and Marketing. It is one of the most valued non-vocational qualifications for graduate jobs due to the skills that it helps develop and its respected academic nature.



# HISTORY

## Course Outline:

Two-Year Pathway

Level 3

A Level

AQA

## Entry Requirements:

Five Level 2 GCSE or Vocational qualifications at a minimum of Grade 4/Level 2 Pass including Grade 6 in English and Grade 6 in History.



If you have a real passion for problem solving, numbers, finances, data, science and of course, algebra, then A Level Mathematics is for you. Mathematics will ensure that you develop invaluable skills to progress into Further Education and future employment. Mathematics consists of three components (Pure, Statistics and Mechanics) and you will be formally assessed at the end of the two year course.

Assessments will also take place throughout the course where the focus will be on all topics covered up to that point. This allows students and teachers to identify areas of strength and if necessary, areas for development. The formal assessment at the end of Year 13 consists of three papers. Paper 1 focuses on Pure Mathematics only. Paper 2 is a mixture of Pure Mathematics and Mechanics and finally Paper 3 is Pure Mathematics and Statistics. The areas you will study are:

**Pure Mathematics** — Algebra, Polynomials, The Binomial Theorem, Trigonometry, Differentiation, Integration, Exponentials and Logarithms, Further Algebra, Sequences, Trigonometric Identities, Further Differentiation, Integration and Differential Equations, Numerical Methods.

**Statistics** — Data analysis, Hypothesis Testing, Probability and Discrete Random Variables, Probability and Continuous Random Variables, Further Hypothesis Testing.

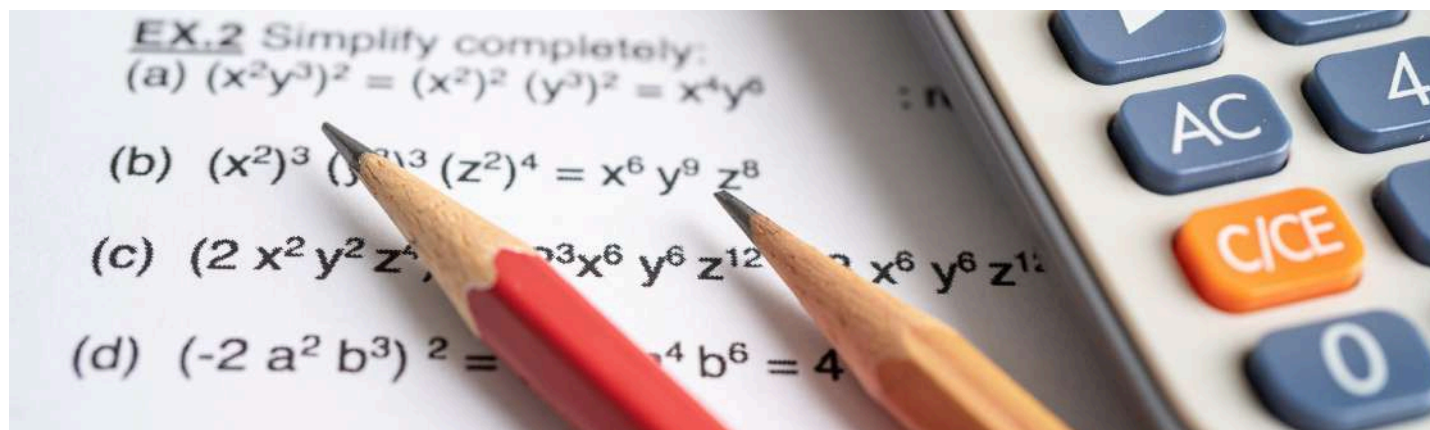
**Mechanics** — Vectors, Kinematics, Forces and Newton's Laws, Motion in Two Dimensions, Further Forces.

## How is this course assessed?

Maths is assessed AT THE end of Year 13 on three equally weighted two hour exams. The first exam covers pure mathematics, the second covers pure and mechanics and the third covers pure and statistics.

"Mathematics at Gell has been hard work; however, I've really enjoyed the challenge. I often spend time in the Mathematics study areas, working through extra questions. My teachers are always there to help and support me."

**Sixth Form Student**





# MATHS

## Course Outline:

Two-Year Pathway

Level 3

A Level

AQA

## Entry Requirements:

Five Level 2 GCSE or  
Vocational qualifications  
at a minimum of Grade  
4/Level 2 Pass including  
Grade 7 or above in  
GCSE Maths.

## Your Future

Mathematics can lead to jobs in:

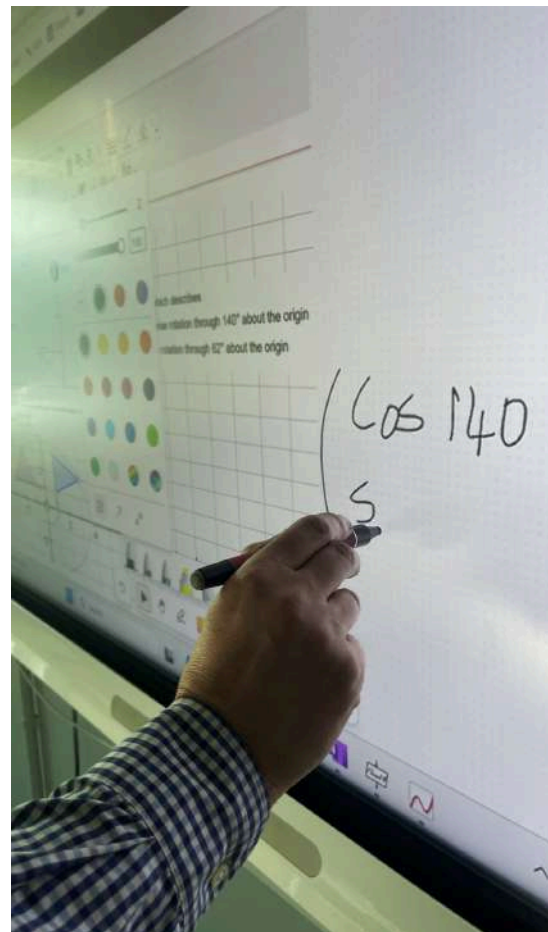
Banking	Insurance
Cybersecurity	Marketing
Defence	Telecommunications
Engineering	Operational Research
Accountancy	Education
Health Service	Computer Science
Law	Statistician
Retail	Civil Service
Energy	Actuarial Science



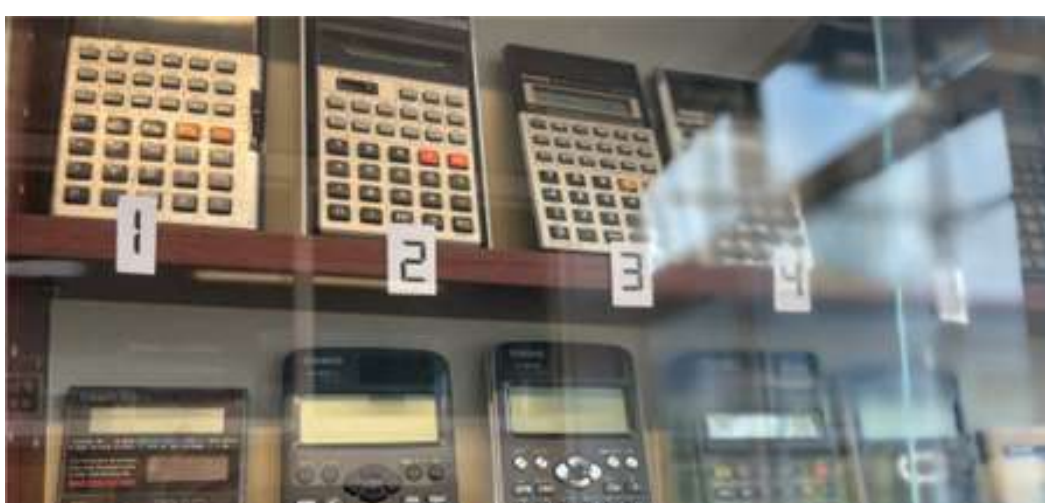
If you like a challenge and want to really deepen your understanding of Mathematics then this is the course for you. Further Mathematics takes you beyond the topics covered in A Level Mathematics, allowing you to explore more abstract concepts that you will definitely find exciting and rewarding. At Anthony Gell, we recommend that if you're looking to study a course in Further Education that includes a significant amount of Mathematics, then Further Mathematics should be considered.

The course itself splits into two main strands. The first strand is the Core Pure Mathematics element which is compulsory. The second strand is the Further Applied Mathematics, consisting of options such as Further Pure, Mechanics, Statistics and Decision. At the end of Year 13 you will have four examinations, each carrying equal weight in terms of overall grade.

Further Mathematics is currently supported by the Advanced Mathematics Support Programme (AMSP). The AMSP allows us to offer Further Mathematics as an A level option. If you choose to study Further Mathematics you will be assigned a course tutor who will be in regular contact with you. In addition to this, the AMSP will run a programme of study that will support your learning. In school, you will also have timetabled lessons where you will be supported by the Mathematics department.  
[www.amspace.org.uk/teachers/a-level-further/student-tuition](http://www.amspace.org.uk/teachers/a-level-further/student-tuition)







# FURTHER MATHS

## Course Outline:

Two-Year Pathway

Level 3

A Level

Edexcel

## Entry Requirements:

Five Level 2 GCSE or

Vocational

qualifications at a

minimum of Grade

4/Level 2 Pass

including Grade 8 or 9

in Maths. GCSE further

Maths Grade 8 or above

is desirable.



"Further Maths allowed me to explore the world of Imaginary Numbers and study Algebra to advanced levels. I've really enjoyed the support and challenge from my Mathematics teachers."

**Sixth Form Student**

## How is this course assessed?

Further maths is assessed at the end of year 13 on 4 equally weighted exams.

## Your Future

Examples of jobs that further maths can lead to are; accountant, aerospace engineer, agricultural engineer, airline pilot and architect. Further mathematics qualifications are highly regarded and are warmly welcomed by universities.

Core Maths is designed for students who want to keep their mathematical skills sharp after GCSE, particularly those studying subjects such as Psychology, Geography, Business, Economics, Biology, or Sociology. It focuses on real-world applications of mathematics, helping you make sense of data, finances, and problem-solving in everyday and professional contexts.

As AQA states, “Core Maths helps students retain, deepen and extend their mathematical skills so they can confidently tackle the kinds of problems they will meet in work, study and life.”

In an increasingly data-driven world, Core Maths provides the tools to think logically, analyse information, and make informed decisions. Universities and employers highly value students with mathematical fluency and reasoning skills.

“Core Maths bridges the gap between GCSE and the real world — it’s about understanding how maths genuinely applies to life.”

“This qualification shows universities and employers that you can handle data, budgets and analysis — key skills in almost every career.”

The course focuses on practical mathematics that supports other A Level subjects and future study or employment. Topics include:

- Analysis of Data – interpreting and representing real-world information.
- Personal Finance – taxation, loans, interest rates, and budgeting.
- Estimation and Fermi Problems – applying logical reasoning to make justified assumptions.
- Risk and Probability – understanding uncertainty in decision-making.
- Critical Analysis of Data and Models – questioning sources, bias and reliability.
- Spreadsheets and Modelling – using technology to solve complex problems efficiently.

## Your Future

Core Maths complements a wide range of subjects and is particularly useful for students aspiring to careers in:

- Business and Management
- Social Sciences and Psychology
- Healthcare and Nursing
- Engineering and Technology
- Finance, Accounting and Economics
- Environmental Sciences and Geography

Employers recognise Core Maths as evidence of numerical competence and problem-solving ability — key attributes in the modern workplace.

“Mathematical thinking is at the heart of decision-making — Core Maths gives students a real advantage, whatever their future path.”



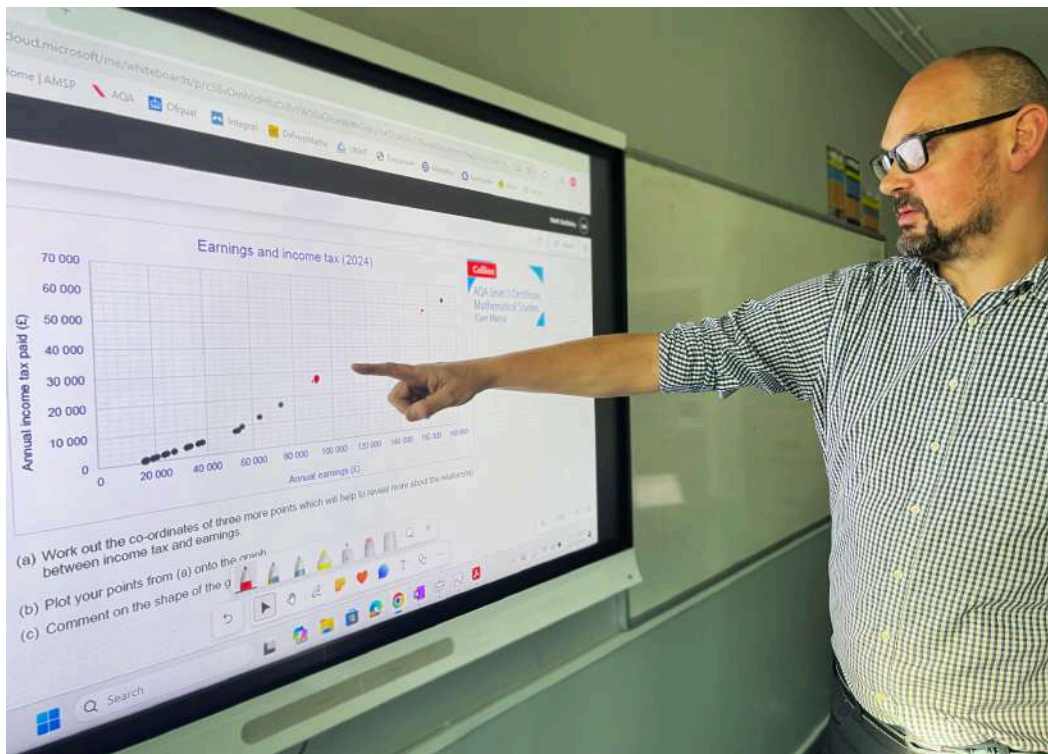
**This is a new course for  
September 2026.**



# CORE MATHS

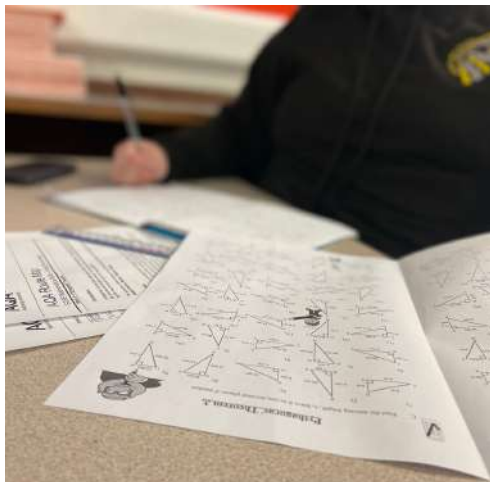
**Course Outline:**  
One-Year Pathway  
Level 3  
A Level  
AQA

**Entry Requirements:**  
Five Level 2 GCSE or  
Vocational  
qualifications at a  
minimum of Grade  
4/Level 2 Pass  
including a Grade 4 in  
Maths.



## How is this course assessed?

The qualification is assessed through two written exams, each worth 50% of the final grade. Students will complete the course in one year with examinations at the end of Year 12.







Media is all around us, and young people interact with media on a daily basis. This course helps you to make sense of the digital world we live in and challenges students to question many of their assumptions about that world. The course provides an opportunity for both practical production work and written analysis.



## Your Future

Media Studies can lead to employment in:

- Advertising and Marketing
- Digital Design
- Public Relations
- Journalism
- Photography and Film Making

"Media Studies is an exciting and practical course which gave me the chance to develop my design and creativity skills. These skills are ones I can use in my chosen career. I also enjoyed the academic challenge of analysing media texts. I am now studying Media and Public Relations at university".

## Sixth Form Student

# MEDIA STUDIES

## Course Outline:

Two-Year Pathway

Level 3

A Level

Eduqas

## Entry Requirements:

Five Level 2 GCSE or

Vocational

qualifications at a

minimum of Grade

4/Level 2 Pass.



**Recital**—You are required to give a recital of a specified length as a soloist or member of an ensemble, on an instrument and in a style of your choice. This must be audio recorded in one sitting. This can be worth 25% or 35% depending on your route preference.

**Composing**—You are required to write a composition based on a choice of briefs given by OCR and one written to your own brief.

Compositions must be audio recorded and scored. You are set a minimum time limit for these. This can be worth 25% or 35% depending on your route preference.

**Listening and Appraising**—This is a two hour paper; familiar and unfamiliar listening material. Some of the paper is based around set musical works. There are compulsory and optional units to study. This is worth 40% of your final mark.

How is this course assessed?		
End of Year 13	Assessment	% of A Level
Recital	Internal	35 or 25 (Depending on choice)
Composing	Internal	35 or 25 (Depending on Choice)
Listening & Appraising	External	40





## Your Future

Music can lead to careers such as Music Therapist, Musician, Music Teacher, Sound Technician, Audio Engineering, Studio Facilities or Music Production and Community Arts Worker.

"There are so many different aspects to the course. With so many different types of music on the course the specs are broad enough that you can concentrate your performance and composition on an area you enjoy, so it makes it fun for everyone. You don't have to be classically trained for it."

**Sixth Form Student**



# MUSIC

## **Course Outline:**

Two-Year Pathway

Level 3

A Level

OCR

## **Entry Requirements:**

Five Level 2 GCSE or Vocational qualifications at a minimum of Grade 4/Level 2 Pass including Grade 6 or above at GCSE Music or a regular performer.

The ability to play an instrument and/or sing and to be able to read music.

This qualification equips learners with skills, knowledge and understanding for entry into employment in the music industry or progression to further study at a higher level. This course is ideal if you love performing and/or composing music in a wide variety of styles. It can lead to further music study at university. This course gives you a wealth of musical experience and transferable skills such as self motivation, creativity, data analysis, performance, teamwork, problem solving and communication.

The learner can follow one of four pathways - performing, composing, technology or business.

Units of work:

- Learners must take two core units. One is externally assessed and one is internally assessed.
- Optional units are selected according to their chosen pathway.

This qualification is completed in the same amount of time as the A Level course; two years, despite it being worth more UCAS points.



How is this course assessed?		
Units	Assessment	% of A Level
Rehearsal skills and live performance	External	30
Live sounds recording and sounds reinforcement	External	30
Music promotion and event management	External	30
Composing styles and music sequencing	External	30
Various choices	Internal	5-15



## Your Future

The music industry makes a vast contribution to the UK economy and continues to grow. There are more jobs than ever in music business related areas such as careers in Digital Marketing, Social Media and PR. It is also common to find music graduates in Consultancy, Finance, Banking and Legal jobs.

"It's a different style of assessment, on-going and portfolio driven with much less focus on terminal examinations—that appeals to some students, as does the subject mix, which tends to be more directly career related".

**Sixth Form Student**



# MUSIC PRACTITIONER

## Course Outline:

Two-Year Pathway

Level 3

RSL

AAQ

## Entry Requirements:

Five Level 2 GCSE or Vocational qualifications at a minimum of Grade 4/Level 2 Pass including Grade 6 or above at GCSE Music or a regular performer.

The ability to play an instrument and/or sing and to be able to read music.



This course is designed to encourage learners to develop skills, creativity, imagination and independence based on personal experience, taught skills and critical understanding. Students will use SLR cameras to create imagery and use Photoshop as an editing program to create a body of work. Students will produce a digital portfolio in which learners are expected to develop a personal response based on a negotiated theme leading to a finished realisation or outcome.

Students explore a range of images, artefacts and resources linked to both traditional and digital photography. They develop on-screen editing skills using Photoshop and other programs, and create fine art responses including collage and 3D constructions. Students will produce work in one or more of the following areas - portraiture, landscape, commercial, still-life, documentary or experimental imagery.

## How is this course assessed?

This course is 60% coursework and 40% exam. Students will create a portfolio of practical work showing their personal response to a negotiated starting point. Students will also write a related study. Both the coursework and exam are assessed against 4 assessment objectives - develop, explore, record and present.



## Your Future

Photography can lead to jobs such as:  
Studio Photographer, Fashion Photographer, Forensic Photographer, Curator, Marketing Director, Photo Editor, Wedding Photographer, Graphic Designer or Teacher.

"Photography lets me hold onto moments that disappear in an instant — it's the closest thing to capturing time itself."

**Sixth Form Student**



# ART & DESIGN - PHOTOGRAPHY

## Course Outline:

Two-Year Pathway

Level 3

A Level

OCR

## Entry Requirements:

Five Level 2 GCSE or Vocational qualifications at a minimum of Grade 4/Level 2 Pass including GCSE Photography. If no GCSE in Photography, a practical test will be set to assess suitability.





The content allows you to study Physical Education in an academic setting, enabling you to critically analyse and evaluate your own physical performance and apply your experience of practical activity in developing your knowledge and understanding of the subject.

Topics to be studied are: Applied Anatomy and Physiology, Exercise Physiology, Biomechanics, Skill Acquisition, Sports Psychology, Sport and Society and Contemporary Issues.

You will explore one activity in detail as a performer or coach, chosen from a wide variety of sporting activities. You will also analyse and evaluate another person's performance in your chosen activity.



How is this course assessed?		
End of Year 13	Assessment	% of A Level
Physiological factors affecting performance	2 hour written paper	30
Psychological factors affecting performance	1 hour written paper	20
Socio-cultural issues in PE and sport	1 our written paper	20
Performance in Physical Education	Non-exam assessment	30





## Your Future

Further study of PE or Sports Science courses as well as other related subject areas such as Psychology, Sociology and Biology. Numerous careers in the sports and leisure industry as well as PE Teaching and Physiotherapy.

"The variety of topics you cover from Anatomy and Physiology to History of Sport to Psychology, gives you an in depth knowledge of sport. It is especially interesting to apply the things you learn to your personal performance. The opportunity for the practical PARTS of the course to be personal made the coursework enjoyable and informative."

## Sixth Form Student



# PHYSICAL EDUCATION

## Course Outline:

Two-Year Pathway

Level 3

A Level

OCR

## Entry Requirements:

Five Level 2 GCSE or Vocational qualifications at a minimum of Grade 4/Level 2 Pass including Grade 6 GCSE PE (including a strong theory exam mark) and grade 6:5 in Combined Science or Grade 6 in Biology. For students who have not taken GCSE PE, consideration given if they play an examined sport outside of school.

This course is equivalent to one A Level in terms of size and teaching hours. It will provide learners with the opportunity, through applied learning, to develop the core specialist knowledge, skills and understanding required in the sports and physical activity sector.

The aim of this qualification is to develop students' knowledge, understanding and skills linked to the principles of Sport and Physical Activity. Students will gain an insight into the sector as they investigate opportunities for delivering sport and physical activity to a wide range of participants, whether it is to mobilise sedentary people to improve their health and wellbeing or to support regular participants to improve their performance and fitness. Students will consider the effects, benefits and barriers to sport and physical activity across all age ranges and social groups, including people with disabilities and BAME, so they can tailor their approach depending on the person, people or situation they're working with to ensure inclusivity. They'll also learn how to work in a safe and effective way, protecting themselves and those they're working with from injury or harm.

Students will practically apply their skills and knowledge in preparation for further study, apprenticeship or the workplace. Students will also develop professional, personal and social skills through interaction with peers, stakeholders and clients, as well as theoretical knowledge and understanding to underpin these skills. This course includes a wide range of centre assessed units, practical and wider project-based assessment opportunities. There are examined units on body systems and the long and short term impacts of sport and physical activity; how sport is organised and the purpose of sports development; health and safety requirements in sport and physical activity; the purpose of, and how to conduct, research in sport and physical activity; and how businesses in sport are organised and what success looks like to them.

"The course has helped me understand not just how to improve performance, but how sport can benefit everyone."

**Sixth Form Student**

## Your Future

Students will gain core skills required for employment or further study such as communication, analysis, organisation and adaptation skills. This course focuses on the requirements that today's universities and employers demand. Sport and physical activity can lead to jobs in teaching, sports coaching and the health and fitness industry.



## How is this course assessed?

Unit 1	Body systems and the effects of physical activity	Exam
Unit 2	Sports coaching and activity leadership	Coursework
Unit 3	Sports organisation and development	Exam
Unit 18	Physical skills in sport and physical activities	Coursework
Unit 19	Sport and exercise psychology	Coursework



# SPORT & PHYSICAL ACTIVITY

## Course Outline:

Two-Year Pathway

Level 3

Cambridge Technical

OCR

AAQ

## Entry Requirements:

Five Level 2 GCSE or Vocational qualifications at a minimum of Grade 4/Level 2 Pass including Grade 5 in GCSE Physical Education. For those who have not previously studied GCSE PE, we would look at your Combined Ccience or Biology Grade.



Physics is our attempt to understand how the Universe works. There are some deep, underlying laws that simplify this ambitious task. In the course you will develop the concepts and knowledge needed to understand these laws and apply them to solve a variety of problems. Practical work is a vital part of Physics; physicists apply their skills in a wide variety of contexts: from nuclear medicine in hospitals to satellite design.

During A Level Physics there will be twelve core practical tasks over both years; these along with other practical work will give you the opportunity to learn, practise and demonstrate these skills.

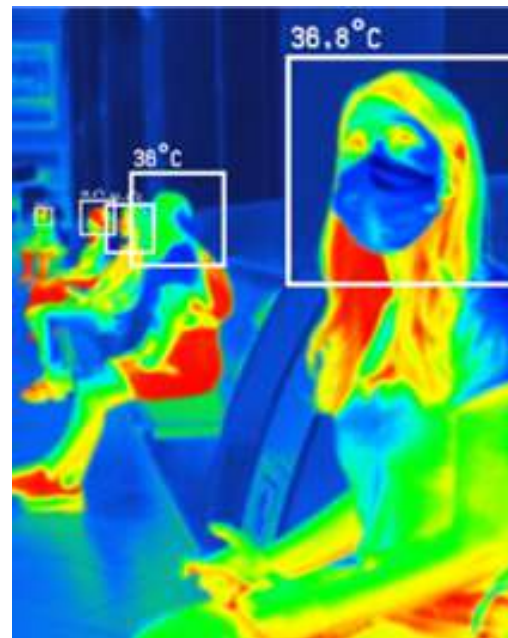
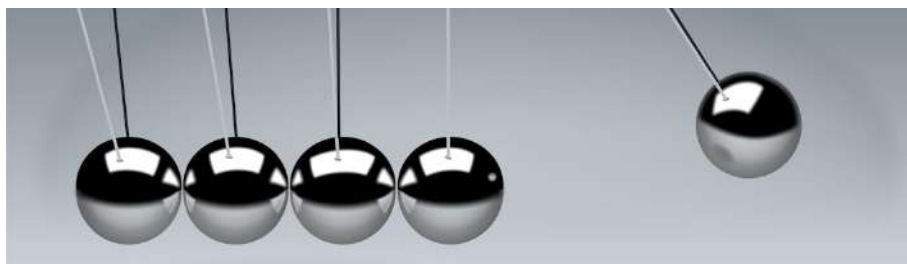
The course includes topics on: Mechanics, Waves, Particles, Electricity, Gravitation, Electromagnetism, Thermodynamics and Radioactivity. Students will also be given the opportunity to choose one of these optional modules: Astrophysics, Medical Physics, Engineering, Turning Points in Physics, Electronics.

"As a Sixth Form physics student, I find it very satisfying to find practical evidence for mathematical concepts".

**Sixth Form Student**

## Your Future

Physics can lead to a large range of degrees and careers including; Engineering, Astronomy, Medicine, Veterinary Science, Architecture and Geophysics. physics is a desirable a level that is highly regarded of by all universities and employers.





## How is this course assessed?

Students are assessed in three examinations, each lasting two hours. The first two exams are 85 marks each, both worth 34% of the qualification the last examination is 80 marks, worth 32% of the qualification.

# PHYSICS

## Course Outline:

Two-Year Pathway

Level 3

A Level

AQA

## Entry Requirements:

Five Level 2 GCSE or Vocational qualifications at a minimum of Grade 4/Level 2 Pass including Grade 6:6 in Combined Science or if Triple Science Grade 6 in Physics and 6 in another science. Also Grade 6 in Mathematics.



This A Level Government and Politics Course gives you the knowledge to understand how government works, particularly in the UK, but also in other countries. Politics will help you develop your research and analysis skills. It will provide you with a deeper understanding of governments and give you more information on careers in politics. Politics is a truly engaging and living subject where events change on a daily basis and have profound consequences for all of our lives.

The course involves three separate units, these are:

### **Component 1: UK Politics.**

This involves an examination of the key methods of political participation including democracy and participation, political parties, electoral systems, voting behaviour and the media. Additionally, students explore the key political ideas of Socialism, Conservatism and Liberalism.

### **Component 2: UK Government.**

This involves an examination of the key political institutions operating in the UK's political system. In this unit students will study: the nature of the evolving British constitution, role and workings of parliament, the power of the Prime Minister and executive, and relationships between the three branches of government. Additionally, students will study one non-core political ideology, chosen from either feminism, ecologism, or nationalism.

### **Component 3: Global politics.**

This involves an examination of the following areas: sovereignty and globalisation, global governance: political and economic, global governance: human rights and environmental, power and developments, regionalism and the European Union, comparative theories.

"Politics has helped me understand how decisions made in government impact our everyday lives. It's exciting studying a subject that changes daily and connects to real-world events."

**Sixth Form Student**

### **Your Future**

If you studied politics, you'll have gained skills useful in both the public and private sectors, in roles which are more varied than you might expect.

Careers that a Politics qualification can lead to Include: Journalism, Law, Military, the Civil Service, Education, Political Research and Teaching.







## How is this course assessed?

Students are assessed in three equally weighted examinations each lasting two hours. The assessments include a combination of essay style and shorter answer questions.

# POLITICS

## Course Outline:

Two-Year Pathway

Level 3

A Level

Edexcel

## Entry Requirements:

Five Level 2 GCSE or Vocational qualifications at a minimum of Grade 4/Level 2 Pass. Including Grade 6 or above in English and Grade 6 or above in a Humanities subject if chosen at GCSE.



This course offers the students an opportunity to gain personal satisfaction and a positive experience from working with a variety of materials. Students will be involved with designing, making and evaluating projects as well as gaining knowledge and awareness of the design process.

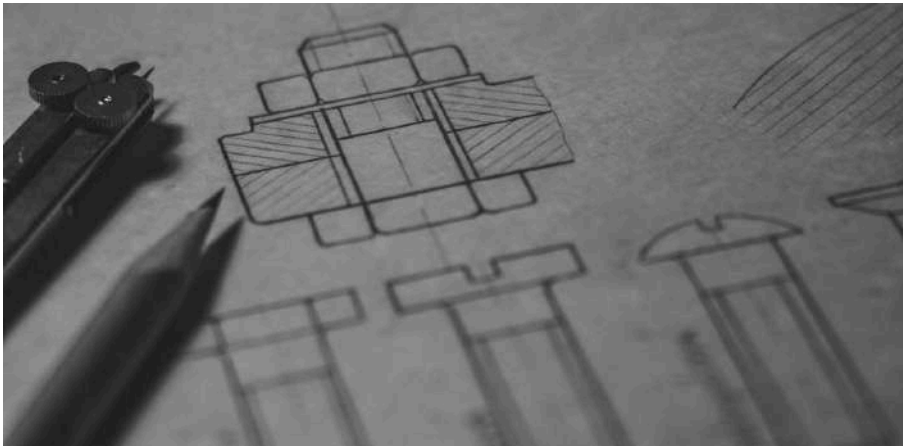
The specification has been designed to encourage candidates to take a broad view of technology and design, to develop their capacity to design and make products and to appreciate the complex relations between design, materials, manufacture and marketing. The course is intended to reflect the wide-ranging activities of professional designers and covers a range of materials. Students will design and make several projects in the workshops, learn about the subject through theory lessons and study designers and their work.

## Your Future

Product Design can lead to jobs in Graphic Design, Product Design, Engineering, Architecture, Construction and Teaching. Our world is full of objects that are designed, this A Level can help you become part of that process.

## How is this course assessed?

Students are assessed on 1 piece of coursework and 2 exams. The 1st exam is 2 and a half hours, is worth 30% and is on technical principles. The 2nd exam is 1 hour 20 minutes, is worth 20% and is on Designing and Making Principles. The coursework is 45 hours and is worth 50% of the a level.





# PRODUCT DESIGN

## **Course Outline:**

Two-Year Pathway

Level 3

A Level

AQA

## **Entry Requirements:**

Five Level 2 GCSE or

Vocational

qualifications at a

minimum of Grade

4/Level 2 Pass. If no

GCSE in Product Design,

a practical test will be

set to assess suitability.



"I can't speak highly enough of both the course itself and the support I received from staff in the Technology department. The course has both creative and technical aspects which can open many career paths in the future. I enjoyed the course so much that I am going on to study Product Design at Loughborough University."

**Sixth Form Student**



Psychology is a fascinating and demanding social science with lots of variety. The subject enables students to investigate causes of human behaviour and provides opportunities for self-discovery and for understanding others. The course builds on research, essay writing and analytical skills that are essential for successful study after A-Level. Psychology is currently the second most popular area of study at undergraduate level and is recognised by universities as an indicator of a student's academic ability.

A Level Psychology is a two year course, entirely assessed by external examination in Y13.

Candidates develop a broad knowledge and understanding of the core areas of psychology. Through a range of topics, chosen for their accessibility and popularity:

**Paper 1:** Three areas of psychology:

Social Influence, Memory and Attachment.

**Paper 2:** Three areas of psychology:

Approaches, Psychopathology and Research Methods.

**Paper 3:** Four areas of psychology:

Issues and debates, gender, schizophrenia and forensic psychology.

## Your Future

Psychology can lead to: Child Studies, Criminology, Mental Health, Nursing, Forensic Investigations, Journalism, Speech Pathology, as well as further study in Psychology.

## How is this course assessed?

Students are assessed at the end of year 13 on 3 equally weighted exams; Introductory topics in Psychology, Psychology in Context, Issues and options in Psychology. Each exam is 2 hours long.





# PSYCHOLOGY

## **Course Outline:**

Two-Year Pathway

Level 3

A Level

AQA

## **Entry Requirements:**

Five Level 2 GCSE or

Vocational

qualifications at a

minimum of Grade

4/Level 2 Pass including

Grade 6 in English, 6 in

Maths and two Grade 6s

in Science.

"I loved learning about societies and how they interact. Also it was fascinating to learn about the human brain and how it works. The case studies of individuals and the issues they have were so insightful. I feel well prepared for life beyond school."

**Sixth Form Student**



Studying Sociology opens up the possibility for fascinating discussions, for example 'what impact do digital forms of communication such as Facebook and Twitter have on social relationships and the wider society?', 'how do sociologists investigate criminal behaviour in society?' and 'what are the patterns and trends of criminal behaviour and educational success in relation to social class?'

#### Units Studied

Unit 1: This examines the formation of culture and identity and how these have developed over time. We take a detailed look at a range of youth subcultures in British society and why these are formed. We explore the role of socialisation in forming our identities and how this has changed over time.

Unit 2: Explores the nature of inequality in society and the impact this has on society. For example, why is society unequal and is it a natural part of society? Students also explore how sociologists research society and the consider the different perspectives relating to the best approaches.

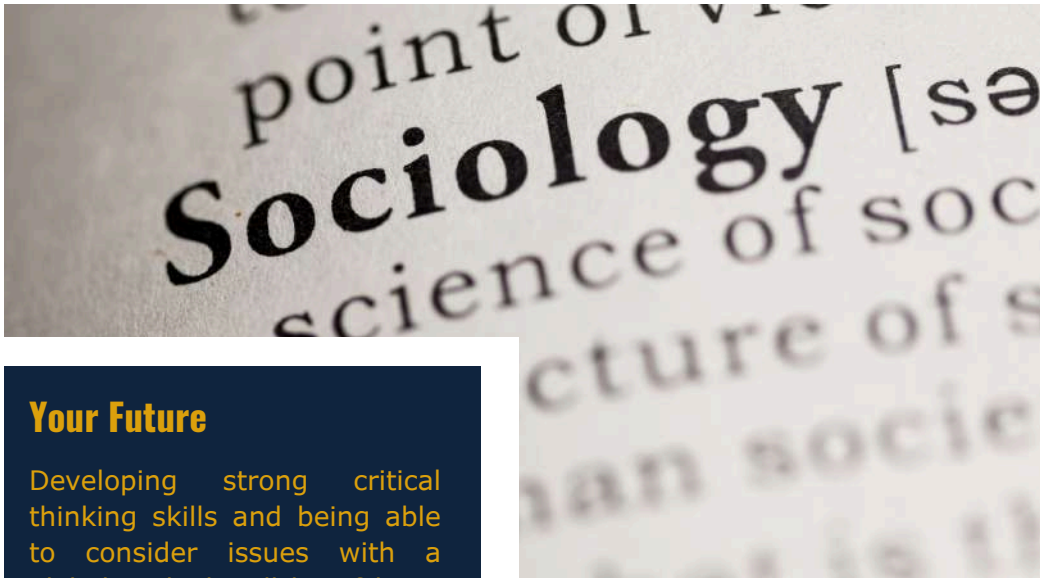
Unit 3: Explores the nature of crime and deviance in society and the competing perspectives to explain the cause and solutions to crime. For example, we will explore whether prisons are an effective way to deal with criminal behaviour or do they make matters worse? Unit 3 also examines the impact of digital communications and globalisation on our identities and society in general.

#### How is this course assessed?

Assessment is examination based with 3 papers at the end of the course. These papers are: Socialisation, Culture and Identity - 1 hour 30 minutes written paper, Researching and understanding social inequalities - 2 hours 15 minutes written paper, Debates in contemporary society - 2 hours 15 minutes written paper.







## Your Future

Developing strong critical thinking skills and being able to consider issues with a global outlook will be of huge benefit to students moving forward, whether this is in further education, the workplace or society in general. Careers that would follow from a course in Sociology include: Policing, Law, Journalism, Teaching, Healthcare and Journalism.

"Sociology gives you an insight into everyday life and how and why society works the way it does. It allows you to see the world from different perspectives and develop an informed opinion".

**Sixth Form Student**

# SOCIOLOGY

## Course Outline:

Two-Year Pathway

Level 3

A Level

OCR

## Entry Requirements:

Five Level 2 GCSE or

Vocational

qualifications at a

minimum of Grade

4/Level 2 Pass including

GCSE English Language

Level 5+.

Religious Studies looks at the philosophy of religion; it is an opportunity to question life, the universe and everything! Can we prove God exists? Was the world created or did it evolve? Is there life after death? You will have your say about some of the most highly-debated issues in the world today. This is a Philosophy, Theology and Ethics course which focuses on some of the biggest questions that humans can ask, and will stretch you to challenge views, opinions and beliefs.

### **Component 1: Philosophy of Religion**

Students study philosophical language and thought, and issues and questions raised by belief.

Study ancient philosophical thinkers like Plato and Aristotle and their impact on Western thought. Examine what it means to be human through debates on the soul, mind and body. Explore arguments for and against God's existence, from classical to modern perspectives. Tackle the classic problem of evil and its challenge to belief in a loving God. Analyse different ideas about God's nature, including power, knowledge and goodness.

### **Component 2: Religion and Ethics**

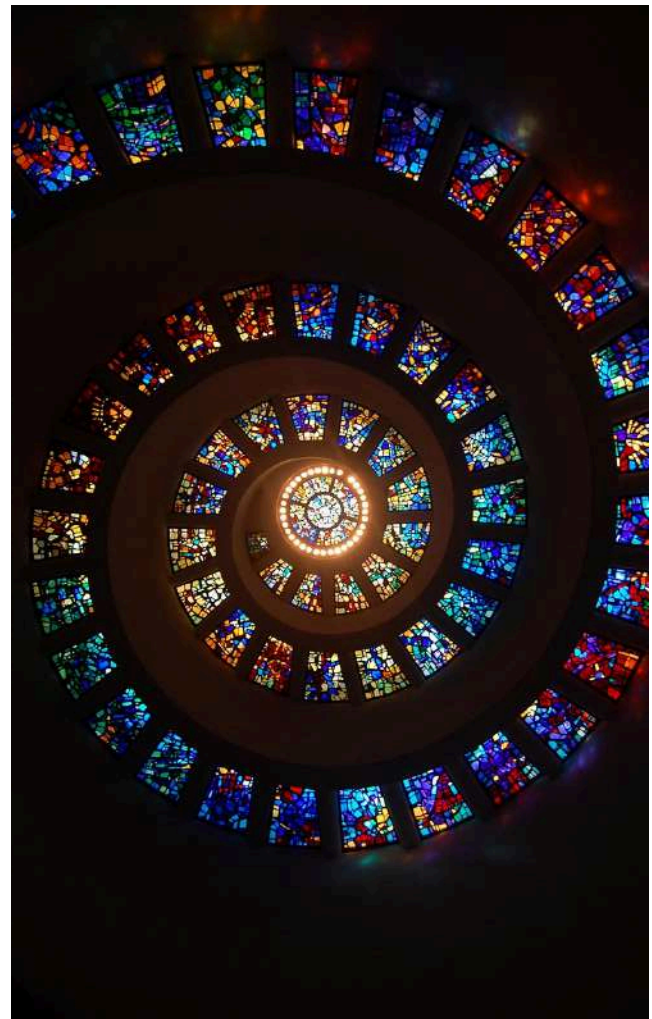
Students explore key concepts and the works of influential thinkers, ethical theories and their application.

You'll explore normative ethical theories such as Utilitarianism, Kantian ethics, and Natural Law, and learn how to apply them to contemporary moral issues like euthanasia and business ethics. Engage with complex ideas about ethical language and explore debates on conscience—is it a moral guide or a social construct? Finally, examine sexual ethics and how changing religious beliefs continue to shape ethical thinking today.

### **Component 3: Developments in Religious thought**

Students explore how Christian beliefs, values and teachings, have developed over time and how they respond to challenges in the modern world.

Examine a variety of sources of wisdom and investigate how Christian thought has evolved through history, tackling big issues like feminism and secularism. Study bold thinkers like Dietrich Bonhoeffer, and ask challenging questions about the role of the Church and the state—should people stand up to injustice? Dive into Liberation Theology and discover how the Bible has inspired social justice movements across Latin America.





## How is this course assessed?

Students are assessed at the end of the course by three equally weighted 2 hour exams, one for each course component.



## Your Future

This versatile subject can lead to careers in the Arts, Marketing, Management, Teaching, Journalism, Social Work, Policing, Medicine, and Politics. It develops the critical thinking, communication, and ethical reasoning skills valued across a wide range of professions.



"The staff are really friendly and supportive. I loved the intellectual challenge and the debates that we regularly participated in.

The philosophically stimulating conversations with other students, who had a range of interests, really helped me to develop my understanding of the subject".

**Sixth Form Student**

# RELIGIOUS STUDIES

## Course Outline:

Two-Year Pathway  
Level 3  
A Level  
OCR

## Entry Requirements:

Five Level 2 GCSE or Vocational qualifications at a minimum of Grade 4/5  
Level 2 Pass including Grade 6 in English Language and Religious Studies (If no GCSE Religious Studies then a minimum of Grade 6 in History is required).





The Sixth Form Centre

"It is wonderful to watch our key stage 5 students progress, as they develop their skills in drawing meanings from some of the great works of literature. Their ideas on how methods and contexts shape how we interpret a text are always impressive and it is a pleasure to teach them".

Mr Flint - English Teacher



School Productions

## AGS: in their own words

"AGS sixth form aided me in competing internationally whilst also studying for my A levels. The skills I learnt will help me throughout life both on and off the bike. The supportive environment really helped me to grow and succeed".

Ewan - International Racing Cyclist and Junior World Record Holder



Parents' Evenings



Trips at AGS



Learning Mentors

"Joining AGS for sixth form, I found a vibrant community that valued academic support and wellbeing. AGS inspired me to embrace challenges and grow into the person I am today."

Megan - Graduated with a First-Class Honours degree in Media Studies and Creative Industries from Warwick University



Art at AGS

Oliver - Degree Business Apprentice at Rolls Royce

"My time at AGS Sixth Form gave me so many opportunities to grow. The teachers genuinely supported me, both academically and personally, and helped me discover what I wanted to do next. Looking back, those two years really shaped who I am today, and I'm grateful for the experience."





Anthony Gell  
— School —

**EMBARK**  
F E D E R A T I O N



Wood Street, Wirksworth, Derbyshire, DE4 4DX



01629 825 577



enquiries@anthonygell.co.uk



www.anthonygell.co.uk



@anthonygellschool



Anthony Gell School



Please contact us for more information, or to arrange a visit. I would also encourage you to take a look at our website where you can find a lot more information about the Sixth Form.

Malcolm Kelly - Headteacher