



Beyond GCSE



Unit 6 covers design strategy, communication techniques and the work of others



Unit 5 covers one material in depth



Unit 4 covers forces, functionality, environmental issues and scales of production

### Exam

Revision of 6 Units

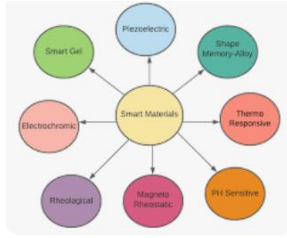
Evaluation

Realisation of final Product

Unit 3 covers materials and their properties. The main categories are papers and boards, timbers, polymers, metals and textiles



Unit 1 covers industry and enterprise, sustainability, industry, customers and design decisions



Unit 2 covers energy, smart, modern and composite materials, systems and mechanisms

Development

# 11

Specification

### NEA Context

Generation of design ideas



On June 1st in year 10 AQA release the contextual challenge

Independently, students manufacture their projects

Working with metal and wood

Black smiths forge



Lathe work



Introduction gardeners trowel project

### Mock NEA

### Gardeners Trowel

# 10

Students investigate the context of their choice to identify a problem, customer design brief and write their specification

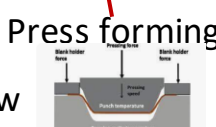
Evaluation

tang



Ferrule

Power Hacksaw



Press forming

### 5 Joint Box

Design ideas

Specification

Development

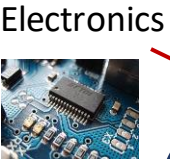
Evaluation

# 9

### D&T Mini NEA



Evaluation



Electronics

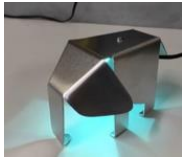


Card Models

Cutting list

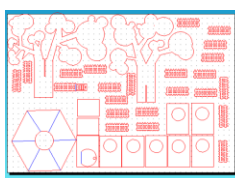
Students work independently

Working with metal and wood



Biomimicry

CAD



The 6 R's

Specification

Biomimicry Design



ACCESS FM Research

Sustainability and the 6R'S

### Sustainable Architecture



Mood Boards

Types of metal

Mood boards

ACCESSFM

Evaluation

Manufacture

CAM Laser cutting

Prototype

Floor Plans

Thumbnail Sketches

Design Brief & Context

# 8

Evaluation

### Textiles

Paper and board

Packaging

Working with wood and plastic

Generating initial ideas

Sketching techniques

Product Analysis

Colour theory

Health and safety in the workshop

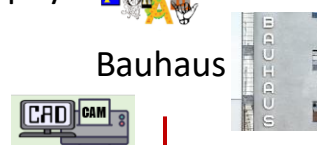
Primary School

Typography

Bauhaus

The design brief

CAD/CAM



### Maze Project

# 7

