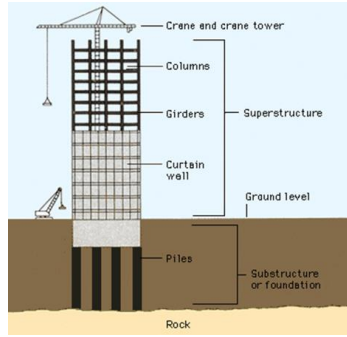


# Beyond GCSE

A Level Product Design  
 Apprenticeships for different trades  
 College  
 University  
 Professional jobs – including Architecture,  
 Civil Engineer, Surveyor  
 Teaching



## Eduqas Constructing the Built Environment Learning Journey



Exam Revision



**Health and Safety at Work Act 1974**  
 Anyone entering these premises must comply with regulations covered by the above act.

3.8 Removing and disposing of materials  
 3.9 Working practices that promote health and safety

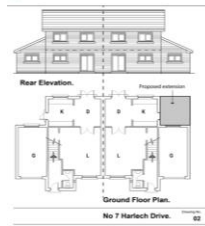
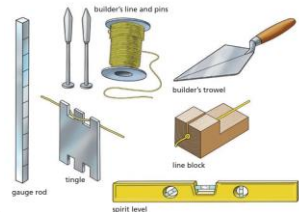
3.7 Carrying out practical tasks

- Bricklaying
- Electrical
- Carpentry
- Painting and Decorating

Unit 1 – 1hr 30 min exam worth 40%      60% Unit 3 – Constructing the Built Environment

1.8 Health and safety

- Hazards, risks, control measures
- Legislation
- Health and Safety at Work Act



Unit 3 – Design Brief and Tasks Set

3.10 Evaluating construction tasks.

3.1 Interpreting technical sources of information

3.5 Writing and setting success criteria  
 3.6 Prepare for construction tasks

**11**



3.2 Planning and organising work  
 3.3 Identifying resource requirements  
 3.4 Calculating the materials required

Unit 3 – Coursework worth 60% of your final grade. 10 hours per trade  
 5 hours practical  
 5 hours planning and evaluating



**10**

### Transition from Year 9



1.1 The Sector

- Buildings and structures
- Infrastructure and civil engineering products
- Building services engineering
- Professional and managerial roles and responsibilities

1.2 The Built Environment

- raw material extraction
- manufacturing
- construction
- operation and maintenance
- demolition
- disposal, reuse or recycling.



1.3 Different types of building and structure



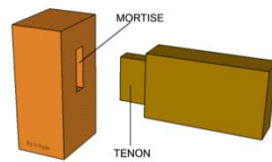
1.4 Technologies and materials in the construction of buildings. Renewable technologies and materials, including heat pumps, wind turbines and solar panels.

1.5 Building structures and forms



Electrician  
 Introduction to Electrical Work

Bricklaying  
Carpenter  
 Window Frame Project  
 Types of wood joints



1.7 Trades, employment and careers

1.6 Sustainable construction methods.

- Environmental, financial, cultural and social benefits
- Pollution and the preservation of the environment
- Sustainable materials
- The 6 R's
- Planning permission